

STEP-BY-STEP ADMISSION GUIDE

✓ UNDERGRADUATE COURSES

June or November	Step 1: Take the Examination for Japanese University Admission for International Students (EJU) The subjects you need to take and the scores you need to obtain differ per faculty
October - December	Step 2: Apply Obtain application form (from October) »»» Submit application (specified date in December)
February	Step 3: Take the Osaka City University entrance exam
1 April	Enter Osaka City University (academic year: 1 April - 31 March)



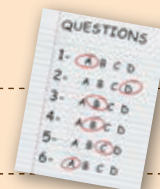
✓ MASTER COURSES

Before July	Step 1: Find an academic supervisor
June - July	Step 2: Apply Obtain application form (from June) »»» Submit application (specified date in July)
August or September	Step 3: Take the Osaka City University entrance exam
1 April	Enter Osaka City University (academic year: 1 April - 31 March) (October entry possible for Graduate School of Science. Application periods differ.)



✓ DOCTORAL COURSES

Before December	Step 1: Find an academic supervisor
November - January	Step 2: Apply Obtain application form (from November) »»» Submit application (specified date in January)
February	Step 3: Take the Osaka City University entrance exam
1 April	Enter Osaka City University (academic year: 1 April - 31 March) (October entry possible for Graduate School of Science, Graduate School of Engineering and Graduate School of Medicine. Application periods differ.)



✓ RESEARCH STUDENTS (6 months or 1 year period of study in preparation for entry into Graduate School)

- Step 1:** Find an academic supervisor
- Step 2:** Apply Application periods, selection and entry dates differ per Graduate School



? HOW TO FIND A SUPERVISOR

- see the list of teaching staff on the HP of each Graduate School
- see the 'Graduate Schools Outline'
- see who teaches a specific course in the syllabus of each Graduate School

- Contact a professor directly or via the Global Exchange Office and provide:
- your academic background (diplomas obtained or expected in the near future)
 - the level you want to study at: research student/master/doctoral
 - which Graduate School and which course you want to enter
 - an indication of your Japanese language ability
 - which professor you would like to ask to become your supervisor
 - your study/research plan
- Email address Global Exchange Office: goto.ocu@ado.osaka-cu.ac.jp